

# Two Bedroom Apartment in Exclusive Residential Development



**Price: 452.000 €**

## GENERAL INFORMATION

Category:	Apartments	Area:	
Location:		N. Bathroom:	2
N. Bedroom:	2	M <sup>2</sup> Inside:	m <sup>2</sup>
M <sup>2</sup> Property:			

## DESCRIPTION

This exclusive residential development comprises 30 one- and two-bedroom apartments located in the peaceful area of San Antonio, Ibiza, close to the sea and within easy reach of all essential amenities.

Designed to offer a relaxed and independent lifestyle, the project combines privacy, comfort, and a strong connection to the surrounding environment. Carefully planned communal areas encourage a natural sense of community and social interaction among residents, while maintaining the tranquility of private living.

A communal rooftop terrace provides the perfect setting to relax, socialize, and enjoy open views over the bay, enhancing the everyday living experience. Residents can also enjoy a communal swimming pool, creating an ideal balance between comfort, functionality, and leisure.

Approximately 80% of the apartments feature one bedroom, while the remaining 20% offer two-bedroom layouts. All homes have been designed as dual-aspect residences to maximize natural light, cross ventilation, and energy efficiency, ensuring bright interiors and improved comfort throughout the year.

Ground-floor apartments benefit from spacious terraces or private gardens on both sides of the property, creating airy indoor-outdoor living spaces.

All apartments include a private parking space and storage room. Interior living areas range from 40.53 m<sup>2</sup> to 72.45 m<sup>2</sup>.

The one-bedroom apartments are ideal for individuals or couples seeking a practical and comfortable home with an independent lifestyle. The two-bedroom apartments provide additional flexibility, perfect for working from home, entertaining guests, or creating extra living space. In the two-bedroom units, the master bedroom includes an en-suite bathroom and a separate guest toilet for added comfort and privacy.

Throughout the development, the apartments feature functional layouts, quality finishes, and contemporary design focused on comfortable Mediterranean living.

Town: 1 min  
Beach: 2 min  
Airport: 20 min

The units will be delivered in the second quarter of 2028







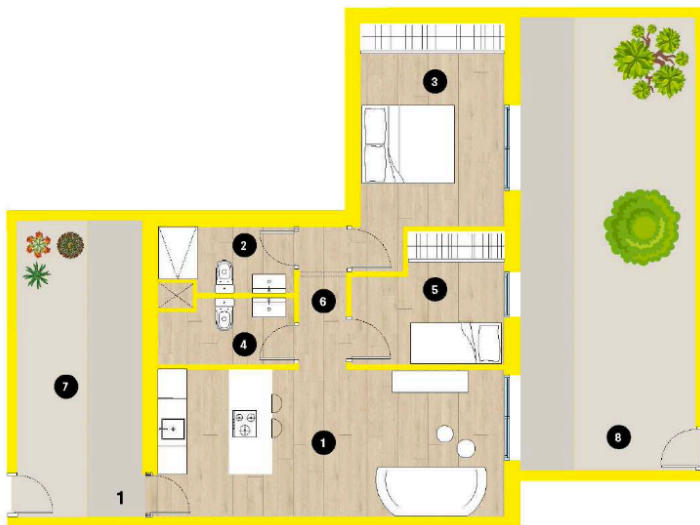




# Planta Baja

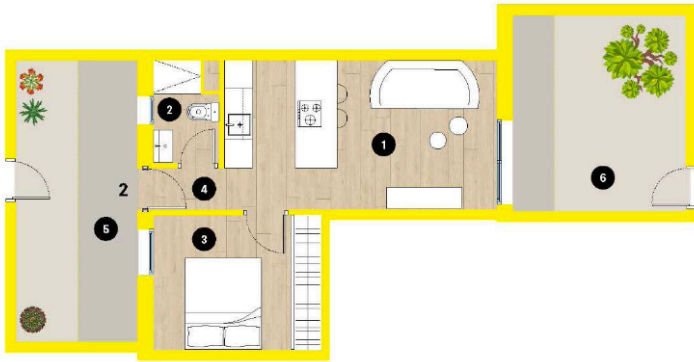
## Bloque 1 | Planta Baja 1

1	Salón-comedor-cocina	22.62 m <sup>2</sup>
2	Baño 1	3.78 m <sup>2</sup>
3	Dormitorio 1	14.03 m <sup>2</sup>
4	Aseo	3.78 m <sup>2</sup>
5	Dormitorio 2	7.90 m <sup>2</sup>
6	Distribuidor	3.02 m <sup>2</sup>
7	Acceso	15.96 m <sup>2</sup>
8	Terraza	27.60 m <sup>2</sup>
<b>Superficie útil</b>		<b>55.13 m<sup>2</sup></b>
<b>Superficie construída</b>		<b>76.26 m<sup>2</sup></b>



ESQUEMA PLANTA BAJA

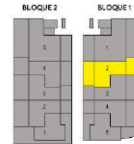




# Planta Baja

## Bloque 1 | Planta Baja 2

1	Salón-comedor-cocina	18,56 m <sup>2</sup>
2	Baño	3,00 m <sup>2</sup>
3	Dormitorio	10,30 m <sup>2</sup>
4	Distribuidor	1,47 m <sup>2</sup>
5	Acceso	15,45 m <sup>2</sup>
6	Terraza	12,05 m <sup>2</sup>
<b>Superficie útil</b>		<b>33,33 m<sup>2</sup></b>
<b>Superficie construída</b>		<b>45,01 m<sup>2</sup></b>



ESQUEMA PLANTA BAJA



# PG

## Planta General

Sup. construída	
Planta primera	452,84 m <sup>2</sup>
Porches com. 50%	28,32 m <sup>2</sup>
Esc. + porche pasillo com 50%	48,09 m <sup>2</sup>
Ascensor	9,90 m <sup>2</sup>
<b>Total</b>	<b>539,15 m<sup>2</sup></b>

