

Spectacular Seaview Plot in Can Germa



Price: 1.490.000 €

GENERAL INFORMATION

Category:	Villas, Luxury Houses, Land		
Location:	Sant Antoni de Portmany	Area:	Can Germa
N. Bedroom:	5	N. Bathroom:	5
M ² Property:	883	M ² Inside:	326m ²

DESCRIPTION

This exquisite project features a splendid 883-square-meter plot with a swift 30-day permit for a 326-square-meter living space, complemented by an additional 248 square meters in the basement and a generous 60-square-meter pool.

The capacious garage effortlessly accommodates up to four vehicles, while the outdoor area beckons with a dedicated barbecue space and a meticulously landscaped garden.

Boasting 5 bedrooms and bathrooms, the home's design is a testament to its inherent elegance and sophistication. What truly distinguishes this property is the awe-inspiring panoramic sea views, making it a rare gem among properties. Perched above Cala Salada, it enjoys close proximity to the beach, offering a peaceful and serene ambiance, epitomizing absolute tranquility and unforgettable sea vistas.

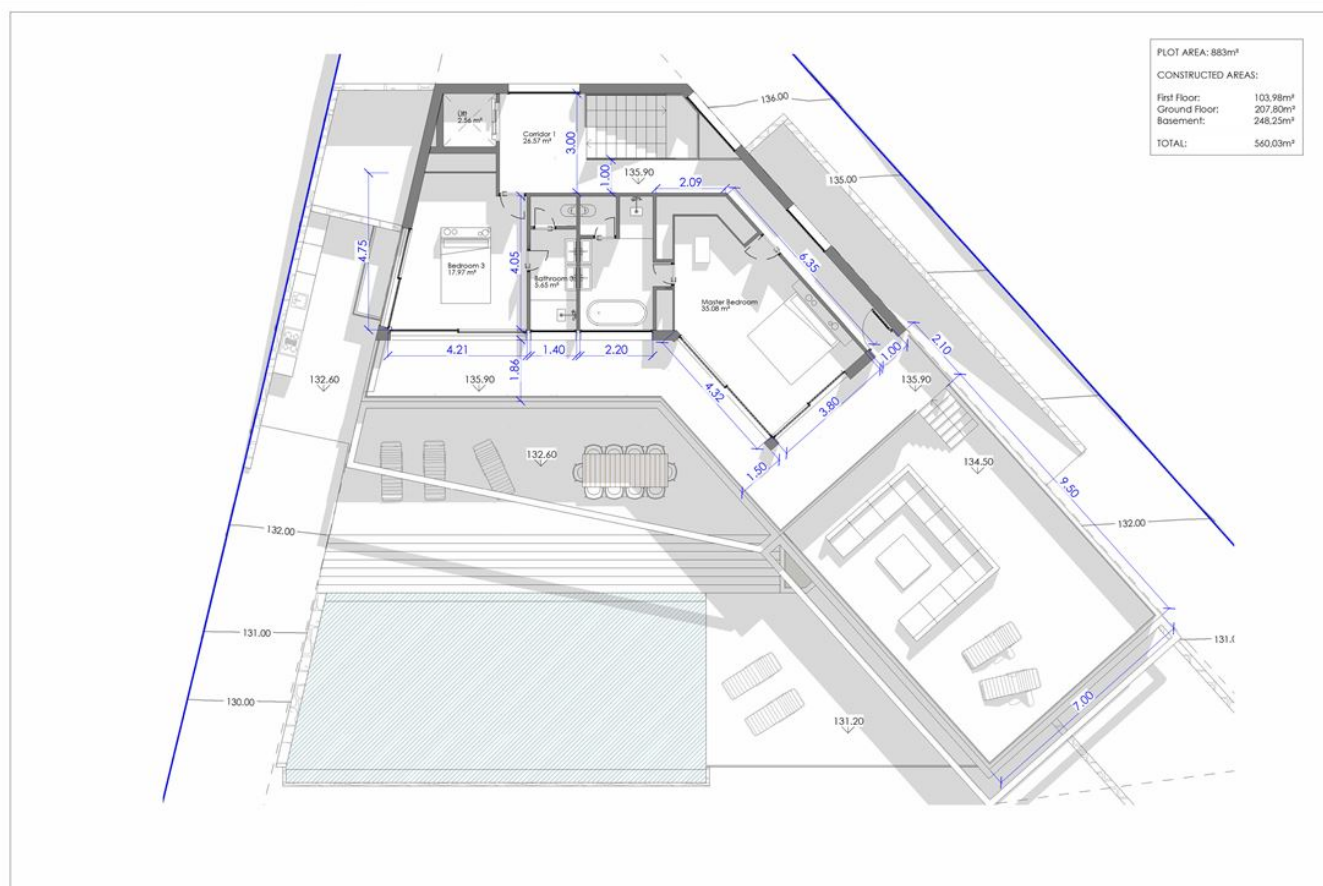
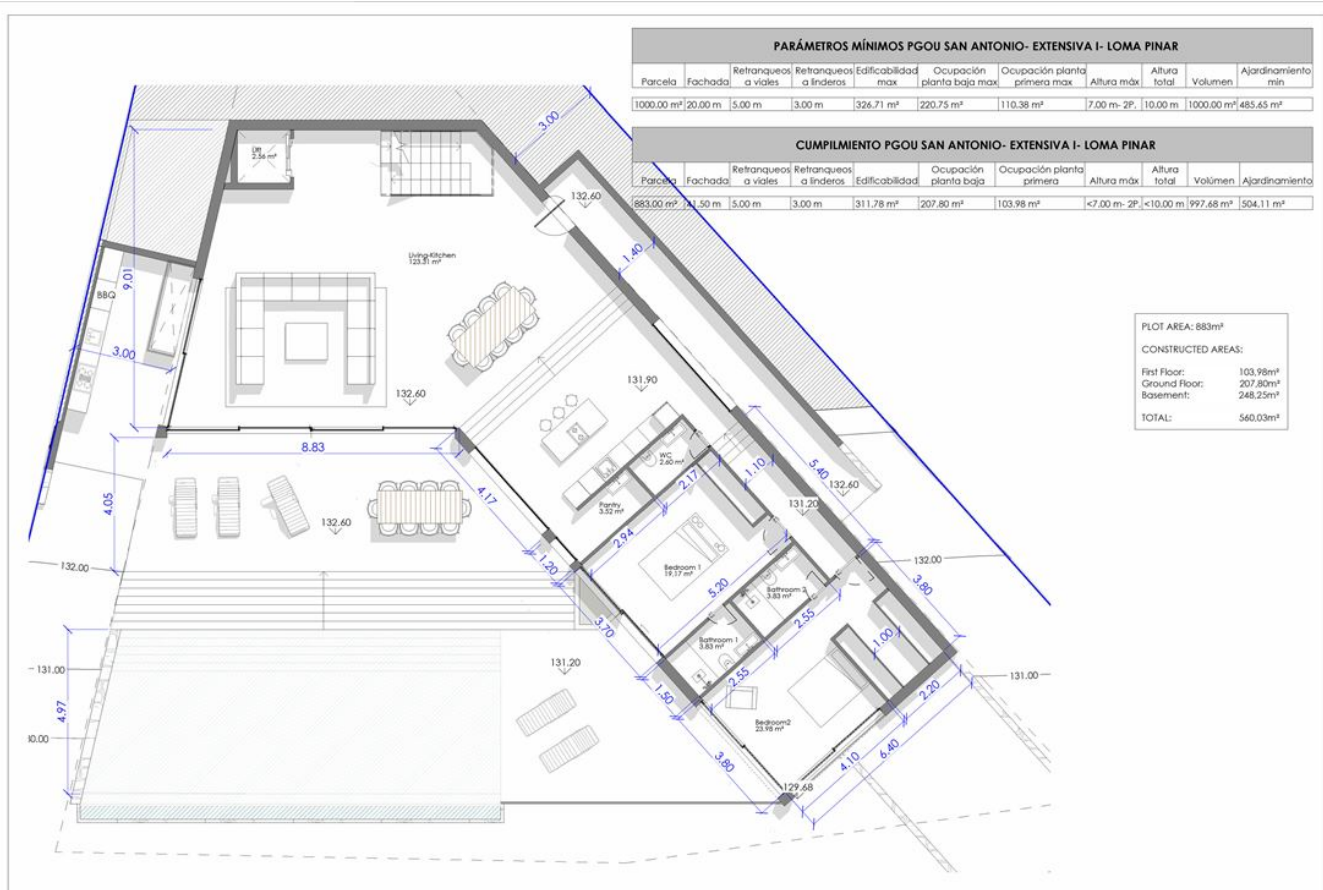


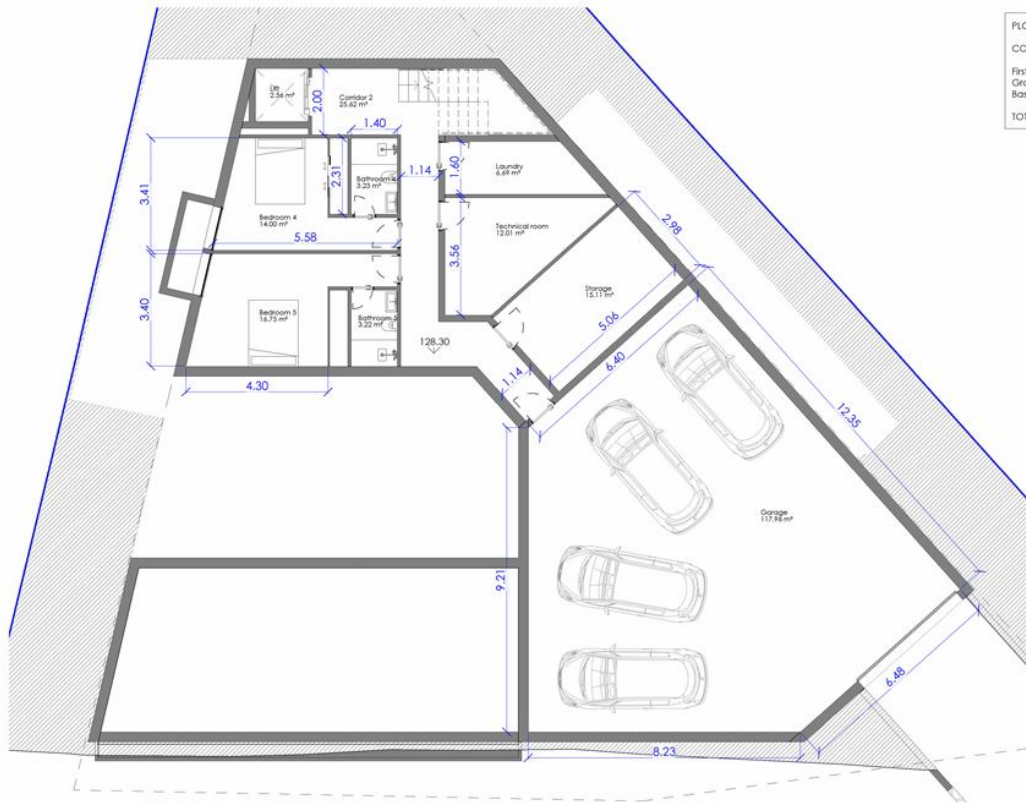












PLOT AREA:	883m²
CONSTRUCTED AREAS:	
First Floor:	103.98m²
Ground Floor:	207.80m²
Basement:	248.25m²
TOTAL:	560.03m²

