

One Bedroom Apartment in Exclusive Residential Development



Price: 349.440 €

GENERAL INFORMATION

Property Ref:	CW-D-IV-350	Category:	Apartments
Location:		Area:	
N. Bedroom:	1	N. Bathroom:	1
M ² Property:		M ² Inside:	



This property is not for sale until the energy certificate has not been submitted.

DESCRIPTION

This exclusive residential development comprises 30 one- and two-bedroom apartments located in the peaceful area of San Antonio, Ibiza, close to the sea and within easy reach of all essential amenities.

Designed to offer a relaxed and independent lifestyle, the project combines privacy, comfort, and a strong connection to the surrounding environment. Carefully planned communal areas encourage a natural sense of community and social interaction among residents, while maintaining the tranquility of private living.

A communal rooftop terrace provides the perfect setting to relax, socialize, and enjoy open views over the bay, enhancing the everyday living experience. Residents can also enjoy a communal swimming pool, creating an ideal balance between comfort, functionality, and leisure.

Approximately 80% of the apartments feature one bedroom, while the remaining 20% offer two-bedroom layouts. All homes have been designed as dual-aspect residences to maximize natural light, cross ventilation, and energy efficiency, ensuring bright interiors and improved comfort throughout the year.

Ground-floor apartments benefit from spacious terraces or private gardens on both sides of the property, creating airy indoor-outdoor living spaces.

All apartments include a private parking space and storage room. Interior living areas range from 40.53 m² to 72.45 m².

The one-bedroom apartments are ideal for individuals or couples seeking a practical and comfortable home with an independent lifestyle. The two-bedroom apartments provide additional flexibility, perfect for working from home, entertaining guests, or creating extra living space. In the two-bedroom units, the master bedroom includes an en-suite bathroom and a separate guest toilet for added comfort and privacy.

Throughout the development, the apartments feature functional layouts, quality finishes, and contemporary design focused on comfortable Mediterranean living.

Town: 1 min
Beach: 2 min
Airport: 20 min

The units will be delivered in the second quarter of 2028







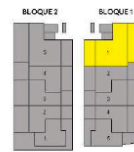




Planta Baja

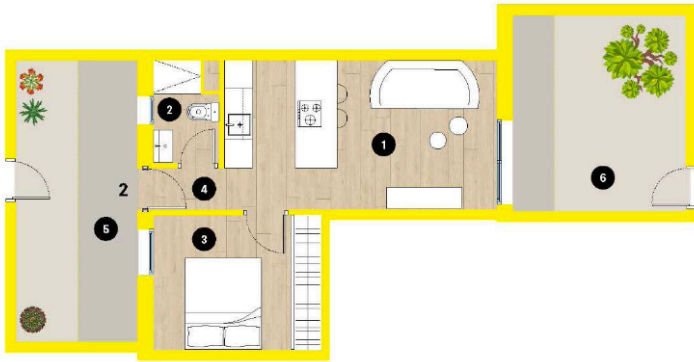
Bloque 1 | Planta Baja 1

●	Salón-comedor-cocina	22.62 m ²
●	Baño 1	3.78 m ²
●	Dormitorio 1	14.03 m ²
●	Aseo	3.78 m ²
●	Dormitorio 2	7.90 m ²
●	Distribuidor	3.02 m ²
●	Acceso	15.96 m ²
●	Terraza	27.60 m ²
Superficie útil		55.13 m²
Superficie construída		76.26 m²



ESQUEMA PLANTA BAJA

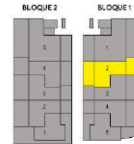




Planta Baja

Bloque 1 | Planta Baja 2

1	Salón-comedor-cocina	18,56 m ²
2	Baño	3,00 m ²
3	Dormitorio	10,30 m ²
4	Distribuidor	1,47 m ²
5	Acceso	15,45 m ²
6	Terraza	12,05 m ²
Superficie útil		33,33 m²
Superficie construída		45,01 m²



ESQUEMA PLANTA BAJA



PG

Planta General

Sup. construída	
Planta primera	452,84 m ²
Porches com. 50%	28,32 m ²
Esc. + porche pasillo com 50%	48,09 m ²
Ascensor	9,90 m ²
Total	539,15 m²



Ctra, Jesus 101, Edif Centro, Planta Baja, Local 5,
07819 Jesus, Ibiza, Spain

Phone: +34 604 190 540 / 871 030 774
E-Mail: info@cw-ibiza.de
Website: www.cw-ibiza.de
