

## Luxury Apartments in Ibiza - Cutting-Edge Design, Comfort, and Seaside Exclusivity - Building 2 Floor 2



**Price: 3.280.000 €**

### GENERAL INFORMATION

Property Ref:	CW-D-IV-328	Category:	Apartments
Location:	Paseo Juan Carlos I	Area:	
N. Bedroom:	3	N. Bathroom:	3+1
M <sup>2</sup> Property:		M <sup>2</sup> Inside:	220



This property is not for sale until the energy certificate has not been submitted.

### DESCRIPTION

This exclusive residential complex, located on the only available seafront plot along Paseo Juan Carlos I, offers an elegant and modern architectural concept. Inspired by Ibiza's unique light, they have created a contemporary building with striking overhangs and a distinctive façade that captures the essence of the White Island.

The development is conceived as a sanctuary of well-being, relaxation, and sensory enjoyment. Every detail has been carefully designed to offer comfort and harmony, from the choice of materials

to the interior layout—spacious, bright, and functional. Each residence is thoughtfully divided into day and night areas, promoting both social living and privacy.

The apartments, ranging from 200 m<sup>2</sup> to an impressive 612 m<sup>2</sup> in the case of the two-story penthouse, feature open living rooms with large windows, fully equipped kitchens with state-of-the-art appliances, expansive terraces with sea views, and suites with en-suite bathrooms, all finished to the highest standards. The interior aesthetic uses natural tones—white, sand, and earth—that reflect the island's landscape and create a warm, serene ambiance.

Technology and comfort come together with advanced home automation systems that allow residents to control lighting, climate, underfloor heating, and more. Each unit is also pre-installed for motorized curtains and other smart features.

Sustainability is a core value of the project. The apartments' orientation, the use of lattice sunshades, natural cross-ventilation, and solar-protective glazing reduce energy consumption and enhance thermal efficiency. Eco-friendly construction materials ensure a responsible and environmentally conscious build.

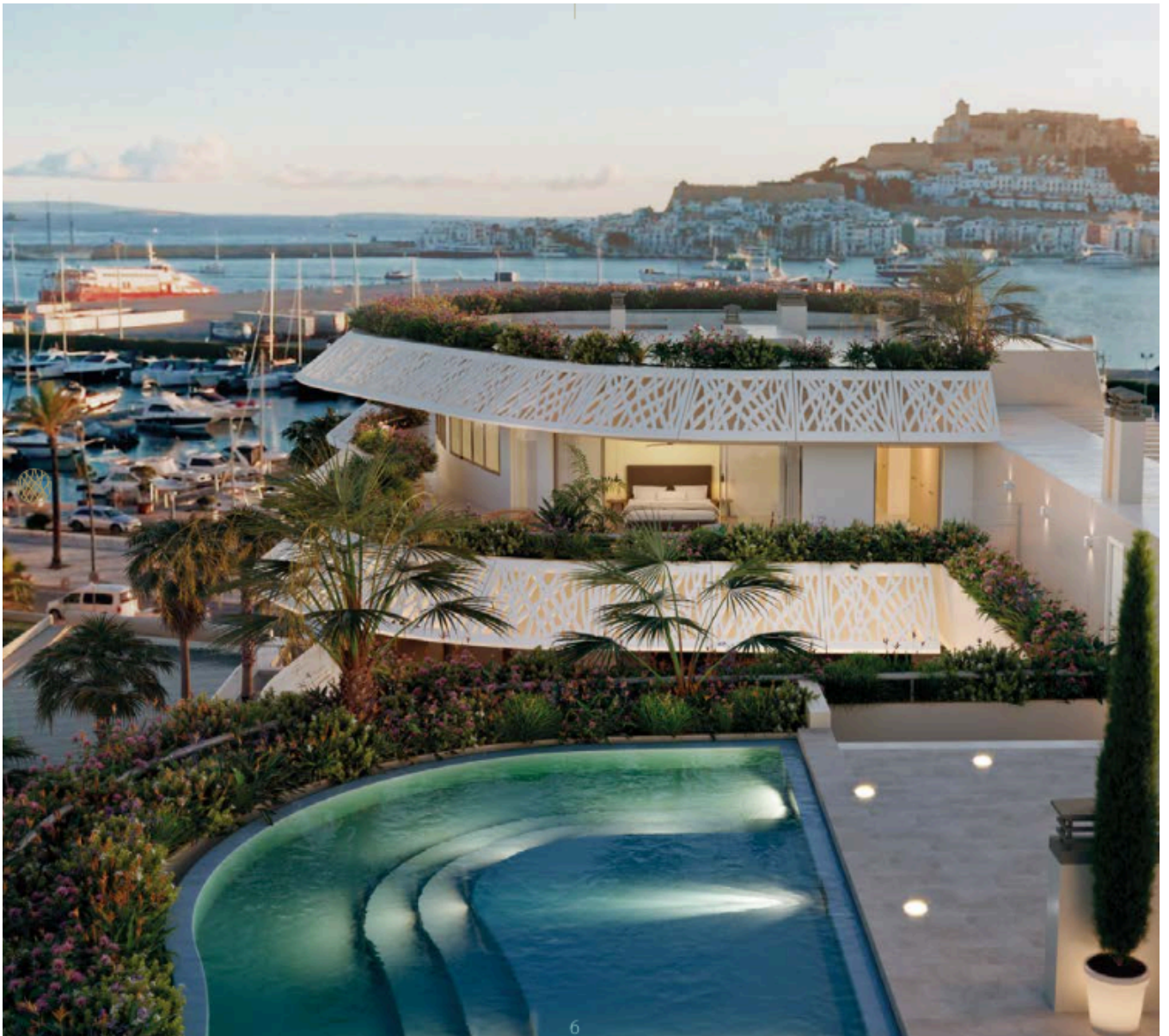
Security is guaranteed through a video surveillance system, video intercom, and touch-screen access controls in communal areas. Landscaping, designed to integrate native Mediterranean plants and flowers into both ground-level and elevated green spaces, seamlessly blending nature with architecture and promoting biodiversity.

The rooftop features a spectacular saltwater swimming pool with next-generation temperature control and a solarium. Each resident enjoys a private, furnished chill-out area with exclusive amenities, allowing for full privacy and comfort in an open setting. The organically shaped pool, finished in natural quartz, adds a unique touch and reinforces the exclusivity and sustainability of the project.

This development offers not only luxurious homes but a refined lifestyle deeply connected to Ibiza's natural beauty. A truly unique opportunity for those seeking design, technology, tranquility, and privileged sea views in one of the Mediterranean's most sought-after locations.





























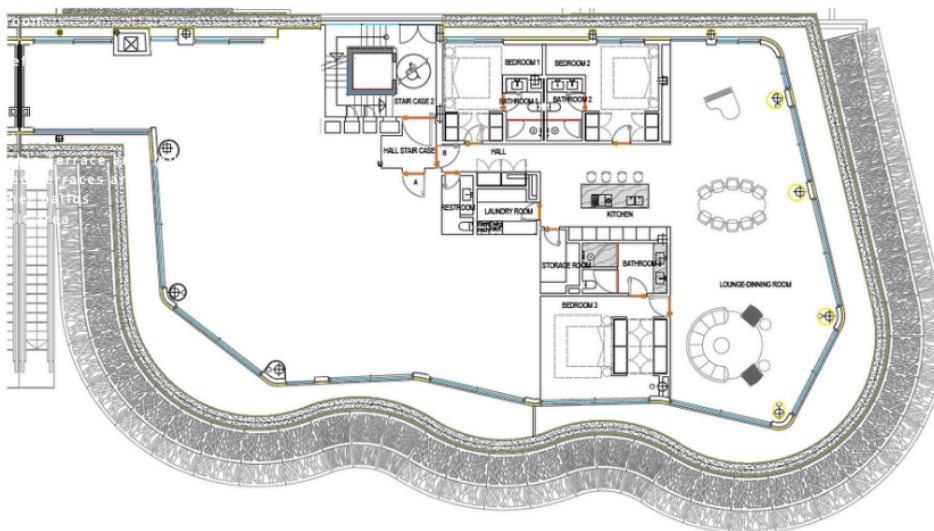












#### SURFACE TABLE

Hall	6,80m <sup>2</sup>
Bedroom 1	13,75m <sup>2</sup>
Bedroom 2	16,45m <sup>2</sup>
Bedroom 3	24,90m <sup>2</sup>
Bathroom 1	3,75m <sup>2</sup>
Bathroom 2	4,20m <sup>2</sup>
Bathroom 3	7,90m <sup>2</sup>
Living - dining room	102,25m <sup>2</sup>
Kitchen	23,85m <sup>2</sup>
Storage room	4,35m <sup>2</sup>
Laundry room	5,15m <sup>2</sup>
Restroom	4,35m <sup>2</sup>
<b>Total Useful Surface:</b>	<b>217,70m<sup>2</sup></b>

Enclosed area	243,28m <sup>2</sup>
Computable Terrace area (100%)	67,79m <sup>2</sup>
<b>Total Built area</b>	<b>311,07m<sup>2</sup></b>

#### COMMUNITY AREA

Pool	215,22m <sup>2</sup>
Sunbeds - Solarium Area	318,96m <sup>2</sup>
<b>TOTAL</b>	<b>534,18m<sup>2</sup></b>

#### PRICE

SUITES	3	FLOOR PRICE	3.180.000€
PARKING AREA	2	PARKING PRICE	100.000€
		<b>TOTAL</b>	<b>3.280.000€</b>



Ctra, Jesus 101, Edif Centro, Planta Baja, Local 5,  
07819 Jesus, Ibiza, Spain

Phone: +34 604 190 540 / 871 030 774

E-Mail: [info@cw-ibiza.de](mailto:info@cw-ibiza.de)

Website: [www.cw-ibiza.de](http://www.cw-ibiza.de)

---